

MID WEST PRODUCTS, INC.

40" TRAILING PLUG AERATOR – MODEL HDP-40



Owner's Manual and Parts List

SAVE THIS MANUAL

You will need this manual for the safety instructions, assembly instructions and parts list. Put it in a safe, dry place for future reference.

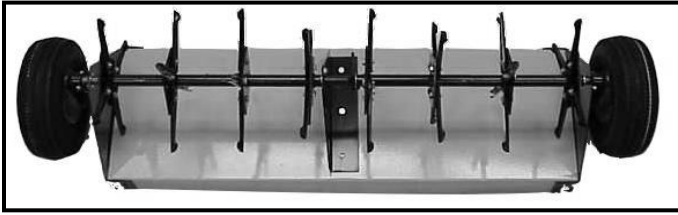
Additional Information/Link to PDF Copy of this Manual:



ASSEMBLY

All reference to left and right are made while standing behind the Plug Aerator and facing the Tractor.

Your Carton should contain the following pieces:



TRAY ASSEMBLY



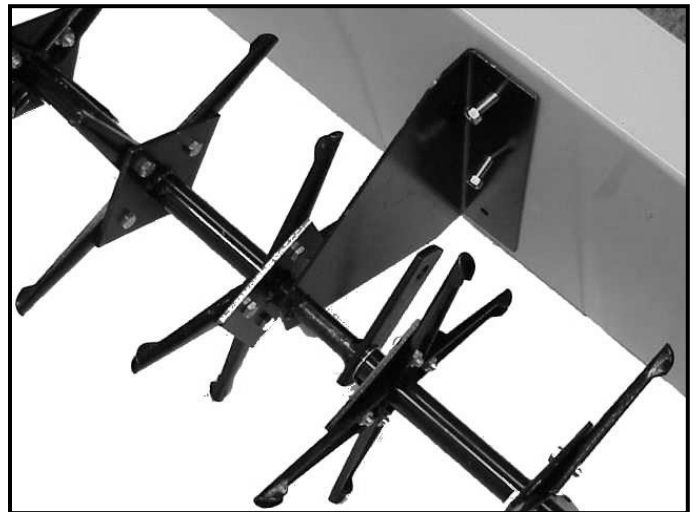
TONGUE ASSEMBLY

Your Plug Aerator has been partially pre-assembled in our factory for your convenience. Please follow these easy steps to complete the final assembly of your Plug Aerator.

You will need: Two (2) 1/2" wrenches and Two (2) 3/4" wrenches for assembly. Your carton should contain Two (2) pieces – the Tray Assembly and the Tongue Assembly.

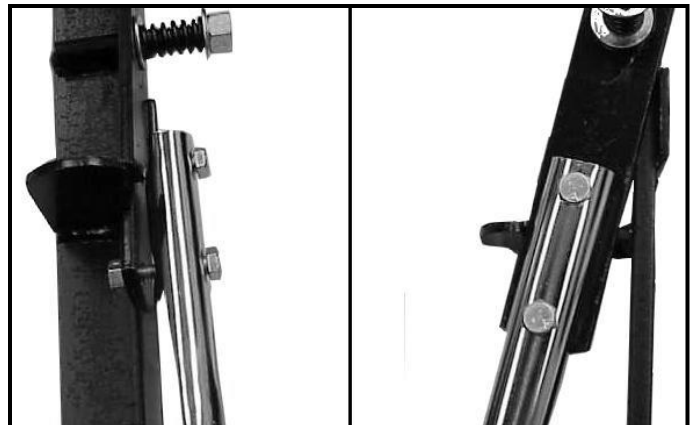
Step 1: Remove the **Tray** and the **Tongue Assemblies** from the box.

Step 2: Tilt the Tray Assembly away from you so that the Wheels are to the back of the unit and Plug Tines are sitting on the ground.

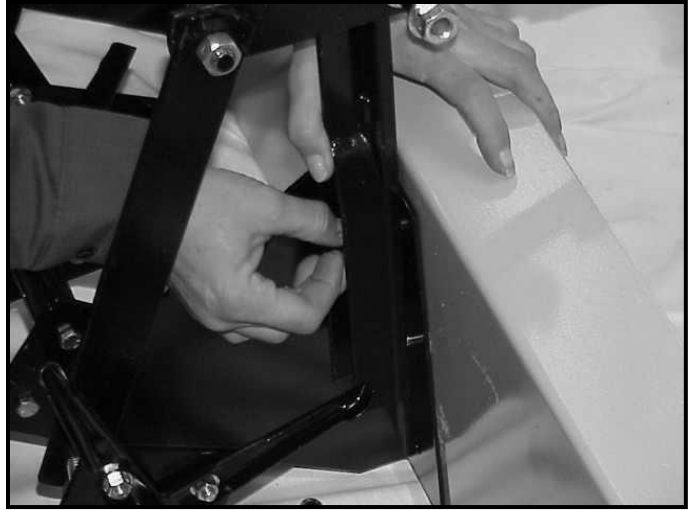


Step 3: Complete the Tongue Assembly:

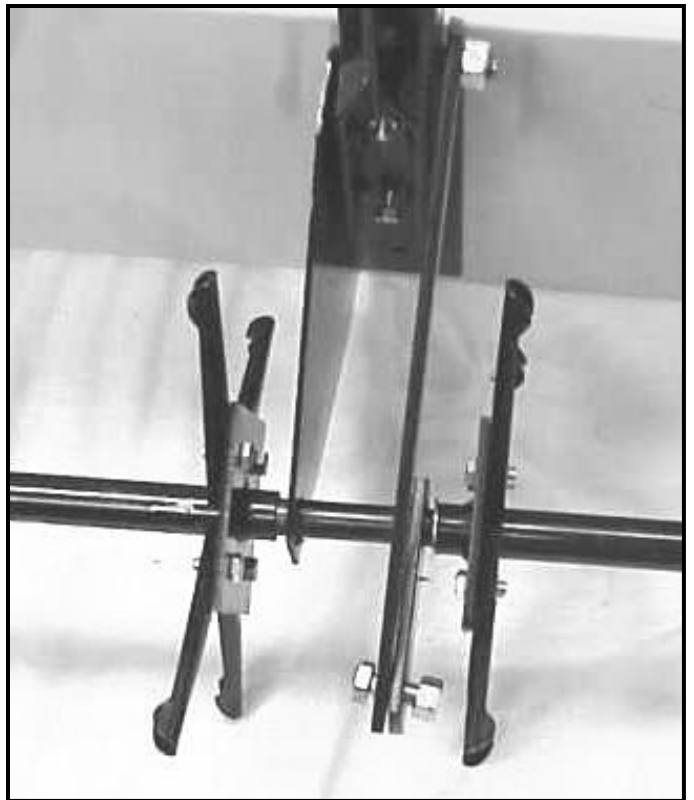
1. Raise the Lift Tube (10) into position and insert Bolt (25) through the Lift Tube (10) and Handle Link (13) and secure with Nut (20). **Note:** The Bolt and Nut needed are already inserted in the Lift Tube for your convenience.



2. Attach the Tongue Assembly (9) to the Tray (2) using two Bolts (28) and two Nuts (20). **Note:** The Bolts and Nuts are already inserted in the Tray for your convenience. Facing the Aerator the Lift Tube will be on the right hand side of the attachment.



3. Position the Lift Tube (10) over the Tray and attach the Shaft Link (12) to the Shaft Assembly (3) using Bolt (23) and Nut (21).



This completes the assembly of your new Plug Aerator.

Thank you for purchasing a Mid West Products Plug Aerator.

CAUTIONS

Please read the Operator's Manual and take note of the Safety Precautions before using your Plug Aerator.

1. Your Plug Aerator was designed to be used on Riders and Lawn/Garden Tractors.
2. Do not stand or ride on the Plug Aerator.
3. Never allow children to operate the Tractor or the Plug Aerator attachment. Adult operators should be provided with proper operating instructions prior to use of your Plug Aerator attachment.
4. The Plug Aerator has sharp Plugging Tines. Always handle with care during actual aeration use. Caution should be exercised at all times when the Plugging Tines are rotating or when the Plugging Tines are being handled.
5. Exercise caution when backing. To avoid jack-knifing, back straight. Jack-knifing could result in damage to your equipment.
6. Repairs, adjustments, and service to your Plug Aerator should be done only while the engine has been stopped, the ignition key has been removed, and the Plug Aerator disconnected from the Rider and/or Lawn/Garden Tractor.
7. Never exceed the recommended operating speed range of 3 to 5 MPH to avoid personal injury, property and/or equipment damage.

MOUNTING AND OPERATION

Aerating involves cutting small holes in the soil to create small reservoirs that will allow oxygen, fertilizer and water to reach the roots. The following lawn preparation and aerator operation is recommended for optimal performance of your Plug Aerator attachment:

- Always engage the transport Wheels to raise the plugs for transporting on concrete or asphalt walks, drives or roads. This engagement can be done by pulling the Lift Tube (10) towards the Tractor into the transport lock position.
- Plug Aerators should be used on established lawns. Plugging is not recommended for newly laid sod.
- Start the Tractor engine with controls in neutral and then place throttle at a slow engine speed.
- Engage the shift lever in lowest possible forward speed and then lower the Aerator by pulling the Lift Tube slightly forward, to the side, and releasing the Lift Tube, allowing the Plugging Tines to enter the ground. Speed can be increased as conditions permit.
- Weight can be added to the Tray as necessary to increase the depth of the Plugs. Weight may be needed for many applications. The Tray has been designed to hold concrete blocks. Secure the concrete blocks by using suitable binding material such as rubber tie down straps or wire.
- Never exceed the **Weight Tray Capacity of 175 pounds**.
- Drive your Tractor to the aeration location. Lower the Aerator to Operating position. Drive the Tractor forward approximately ten feet and stop. Observe the results – there should be a plug hole approximately every 10 to 12 inches. Plugs should not be more than three (3) inches deep.
- The condition of the ground is most important to successful aeration – do not aerate when the ground is extremely hard and parched, or muddy and saturated.

- DO NOT make sharp turns while the Plugging Tines are engaged in the ground as this may damage the Plugging Tines in addition to damaging your lawn.

MAINTENANCE

Your new Plug Aerator is precision made using the finest tools and materials. Although it is ruggedly constructed, do not subject it to misuse. Always check the Nuts and Bolts to insure that they are tightened. We suggest that you apply a light coat of oil to the metal to prevent rust on the Plugging Tines, the Shaft area (the shaft on which the Plugging Tines rotate) or any exposed metal. Always store your Plug Aerator in a dry area.

PLEASE DO NOT RETURN THIS MERCHANDISE TO THE STORE. CALL US AND WE WILL TAKE CARE OF ANY PROBLEMS YOU MIGHT HAVE WITH THIS PRODUCT.

INSTRUCTIONS FOR ORDERING PARTS

(Minimum Parts Order Charge \$20.00)

1. Address all parts orders or correspondence regarding customer service to one of the following:
Parts Dept. Phone: (937) 337-3641
Mid West Products, Inc.
P.O. Box 301 E-mail: Parts@Mid-West-Products-Inc.com
Phillipsburg, OH 45354 Website: www.Mid-West-Products-Inc.com
2. Write your name and address plainly (print or type).
3. Explain where and how to ship.
4. Give model number of unit.
5. Give part number from parts list, as well as a description, including color, of the part and the quantity you need.
6. Inspect all shipments you receive. If any parts are damaged or missing, file a claim with the carrier before accepting.
7. If you are returning parts, be sure to include WITH THE SHIPMENT a list of the parts with your name and address.
8. All orders for repair and replacement parts will be shipped when paid with Master Card, Visa, or personal check/money order. Prices subject to change without notice.

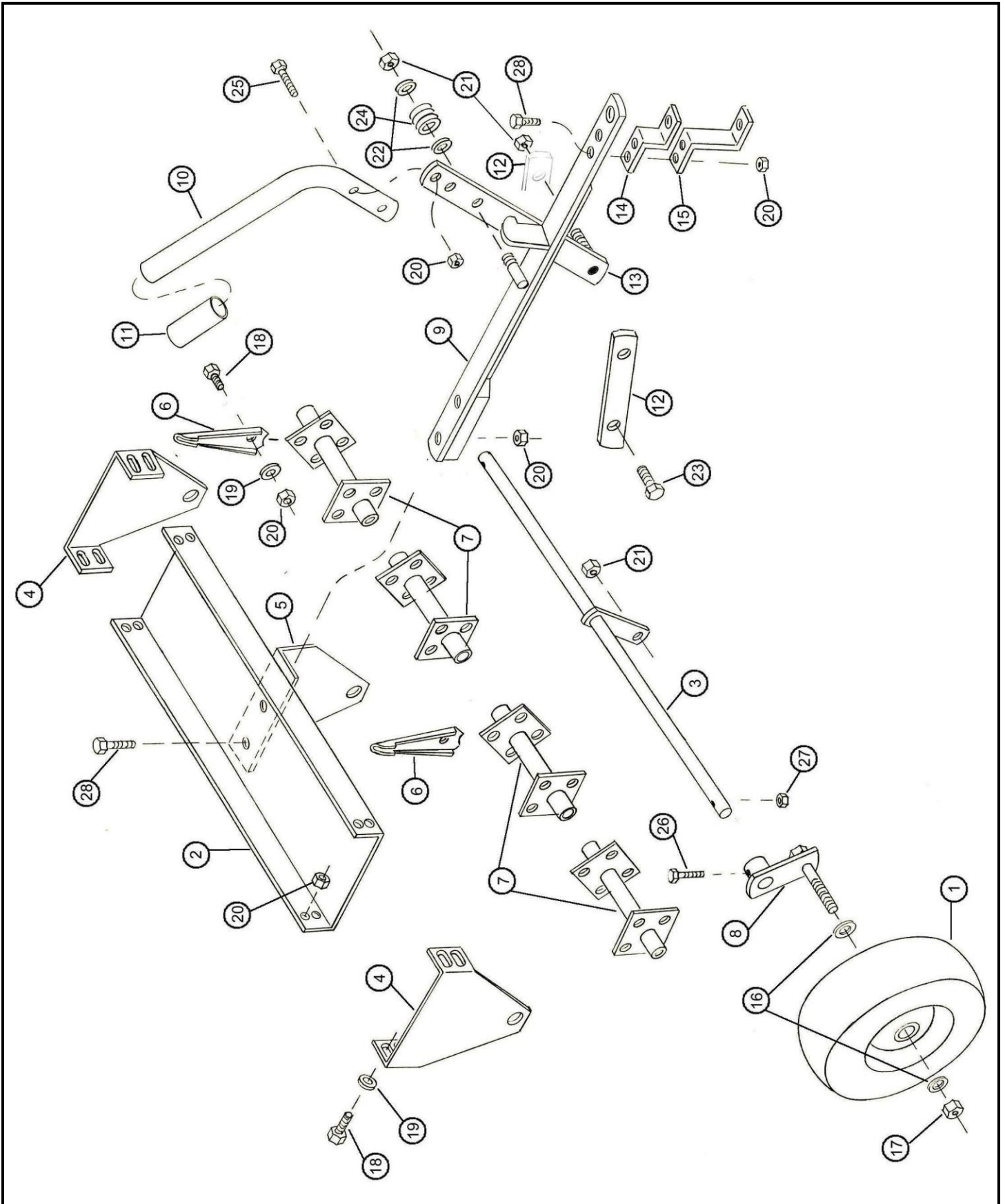
GUARANTEE

The merchandise you have purchased from us has been carefully engineered and manufactured under Mid West Products rigid quality standards and should give you satisfactory, dependable operation. However, like all mechanical merchandise, it may occasionally require adjustment or maintenance. Should you need technical assistance, please contact MID WEST PRODUCTS.

PARTS LIST

Key	Part No.	Description	Qty
1	21-1001	Wheel Assembly	2
2	21-1026	Pan	1
3	21A-1011	Shaft Assembly	1
4	21-1025	End Plate	2
5	21-1028	Center Support	1
6	21-1029	Plug	32
7	21A-1030	Tube Assembly	4
8	21A-1032	Wheel Bracket	2
9	21A-1033	Tongue Assembly	1
10	21-1018	Lift Handle	1
11	16-3080B	Hand Grip	1
12	21-1034	Lift Link	1
13	21A-1050	Handle Link Assembly	1
14	1-2829	Hitch Bracket	1
15	1-2830	Hitch Bracket	1
16	X-1701	5/8 Washer	4
17	X-1700	5/8-11 Lock Nut	2
18	L-59	5/16-18 X ¾ H.H.C.S.	40
19	L-99	5/16 Washer	40
20	X-1107	5/16-18 Lock Nut	46
21	X-1353	½-13 Lock Nut	3
22	L-64A	½ Washer	2
23	X-1258	½-13 X 1 ¼ H.H.C.S.	1
24	1-2670	Spring	1
25	L-127	5/16-18 X 1 ½ H.H.C.S.	2
26	L-276	¼-20 X 1 ½ H.H.C.S.	2
27	L-303	¼-20 Lock Nut	2
28	L-81	5/16-18 X 1 ¼ H.H.C.S.	4

PARTS DRAWING



OTHER LAWN & GARDEN TOOLS FROM MID WEST PRODUCTS, INC.

40" Trailing Dethatcher — HDR-40

- Heavy Gauge Steel Chassis.
- Individually Flexing Tine Tips - 3/16" Diameter with Triple Coil Strength.
- Wide Working Width Dethacher with 8" Transport Wheels.
- Adjustable Hitch for Various Rider Heights.
- No tool Assembly.
- **Overall Dim:** 49" L x 43" W x 12" H



38" Deluxe Trailing Lawn Sweeper — HDT-38

- Semi-Pneumatic, Ribbed Tread Rubber Tires mounted on Precision Die Cast Aluminum Wheels.
- Ball Bearing Rear Casters Provide easy Mobility.
- Patented Rear-Dump w/Centered Pull Cord Dumps from Tractor Seat.
- Wind Apron protects 12 Bushel Hamper Capacity.
- Brush Height Control.
- **Overall Dim:** 70" L x 45" W x 40" H

Trailing Steel Dump Cart — HT-10LRTA

- Powder Coated Steel Construction.
- Steel Wheels with 16" x 3" Pneumatic Tires.
- Pin Style Hitch.
- Dump Style, with Removable Tailgate for Easy Unloading.
- Load Capacity: 10 Cu. Ft./500 pounds
- **Bed Dim:** 40" L x 30" W x 12" H.
- **Overall Dim:** 63" L x 34" W x 30" H.



45" Trailing Lawn Sweeper — MH-4451



- Semi-Pneumatic, Ribbed Tread Rubber Tires mounted on Precision Die Cast Aluminum Wheels.
- Ball Bearing Rear Casters Provide easy Mobility.
- Patented Rear-Dump w/Centered Pull Cord Dumps from Tractor Seat.
- Wind Apron protects 15 Bushel Hamper Capacity.
- Brush Height Control.
- **Overall Dim:** 44" L x 50" W x 35" H