

MID WEST PRODUCTS, INC.

40" Trailing Dethatcher – Model HDR-40



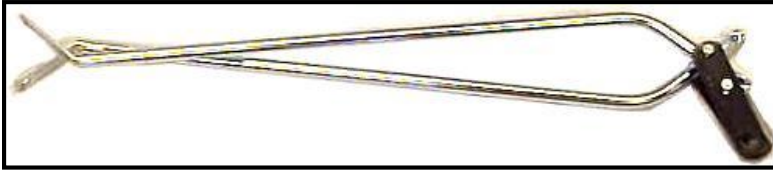
Owner's Manual and Parts List

SAVE THIS MANUAL

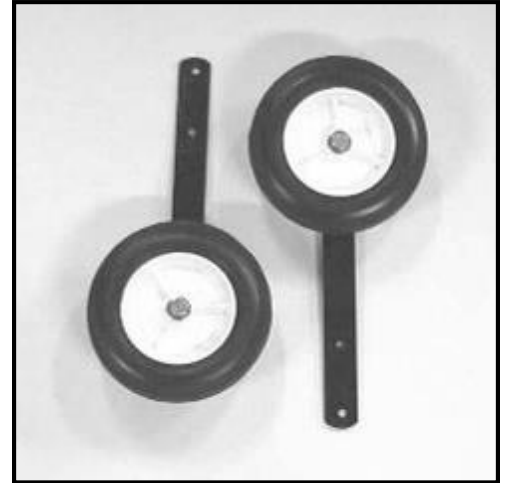
You will need this Manual for the Safety Instructions, Assembly Instructions and Parts List. Put it in a safe, dry place for future reference.

ASSEMBLY

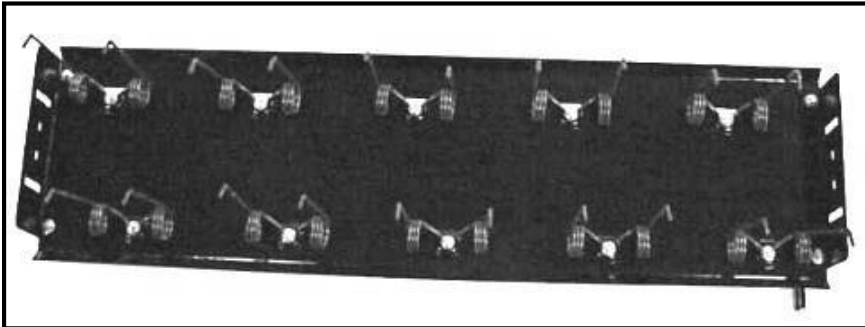
All reference to Left and Right are made while standing behind the Dethatcher and facing the Tractor.



Hitch Assembly



Wheel/Bracket Assembly



Tray Assembly

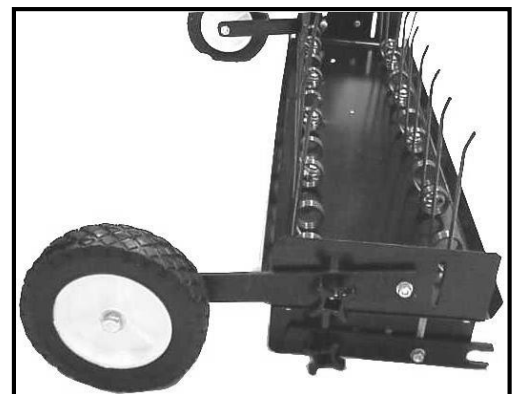
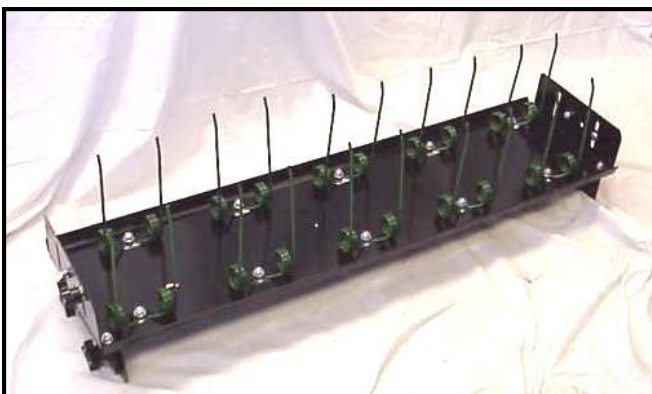
Your carton should contain the following pieces:

You will need two (2) ½" Wrenches and one (1) 9/16" Wrench for assembly.

Your Dethatcher has been partially pre-assembled in our factory for your convenience. Please follow these easy steps to complete the final assembly of your dethatching unit:

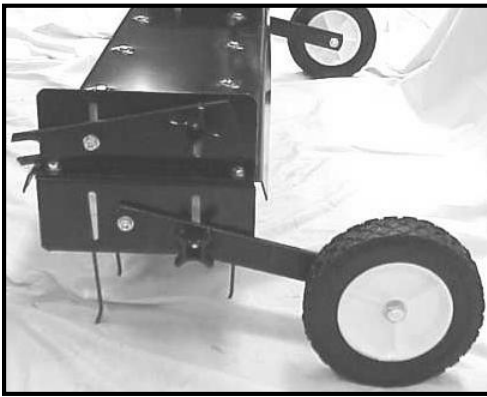
Step 1: Remove the Tray, Hitch, and Wheel Assemblies from the box.

Step 2: Place the tray upside down, so that the tines are facing upward and away from you.



Step 3: Assemble the Wheel/Bracket Assembly to the Tine Side Adjustment Bracket (2). Remove the plastic Knob (9), one Washer (11), the Lock Nut (10), and one Washer (11) from the Tine Side Adjustment Bracket. Place the Wheel Assembly on the outside of the Tine Side Adjustment Bracket with the wheel facing to the outside. The Wheel Assembly should be facing the opposite direction of the Tines. Secure with the hardware that was just removed. Repeat this Step for the other Wheel Assembly.

Step 4: Turn the unit over so that it is resting on the Tines and the Wheels are away from you.



Step 5: Remove the Bolt (17) and the Nut (10) from the center hole of the Hitch Brackets. Re-insert Bolt (17) through the Upper and Lower Hitch Tube (7), and secure with Nut(10) using a Wrench.

Step 6: Assemble the Hitch Tube Assembly to the Adjustment Bracket Unit (2) located on the top of the Tray. Remove the Lock Nut (10) from the Hitch Strap (5). Attach the Hitch Tube Assembly (7) onto the Bolt (18). Repeat the procedure on the opposite side of the Dethatcher. Secure with the hardware that was just removed.



Thank you for purchasing a Mid West Products Dethatcher.

Please read the Operator's Manual and take note of the Safety Precautions before using your Dethatcher.

1. Your Dethatcher was designed for use on Riders and Lawn/Garden Tractors.
2. Do not stand or ride on the Dethatcher.
3. Never allow children to operate the Tractor or the Dethatching Attachment. Adult operators should be provided with proper operating instructions prior to use of your Dethatcher Attachment.
4. The Dethatcher has sharp tines. Always handle with care during actual dethatching use. Tines should be shielded when stored.
5. Exercise caution when backing. To avoid jackknifing, back straight. Jackknifing could result in damage to your equipment.
6. Repairs, adjustments, and service to your Dethatcher should be done only while the engine has been stopped, the ignition key has been removed, and the Dethatcher disconnected from the Rider and/or Lawn/Garden Tractor.
7. Never exceed the recommended operating speed range of 3 to 5 MPH to avoid personal injury and/or equipment damage.

FOR MOUNTING AND OPERATION:

Thatch is a layer of stems, clippings, runners, roots and leaves that have not decayed. Regular removal of thatch is critical to the maintenance of a healthy lawn. With proper adjustment, your Dethatcher will effectively dislodge excessive thatch from your lawn. Excessive thatch prevents air, water and fertilizer from reaching the roots.

Your Dethatcher should be attached to your rider or tractor on a level surface such as a driveway or garage floor.

The Tine "Tips" should be adjusted about ½ inch above the flat surface. Proper Tine Tip adjustment is achieved when Tray (1) is level with the ground, and the Tine Tips are about ½ inch above the flat surface. Adjustment is made with the Knobs (9) and the Carriage Bolts (18) on the topside Adjustment Brackets.

You are now ready to begin dethatching. Upon entry onto a grassy surface, adjust the wheels off the ground.

MAINTENANCE:

Your new Dethatcher is precision made using the finest tools and materials. Although it is ruggedly constructed, do not subject it to misuse. Always check the nuts and bolts to insure that they are tightened. We suggest that you apply a light coat of oil to the metal to prevent rust on the Tines or any exposed metal. Always store your Dethatcher in a dry area.

***PLEASE DO NOT RETURN THIS MERCHANDISE TO THE STORE.
CALL US AND WE WILL TAKE CARE OF ANY PROBLEMS YOU MIGHT HAVE WITH THIS
PRODUCT.***

INSTRUCTIONS FOR ORDERING PARTS

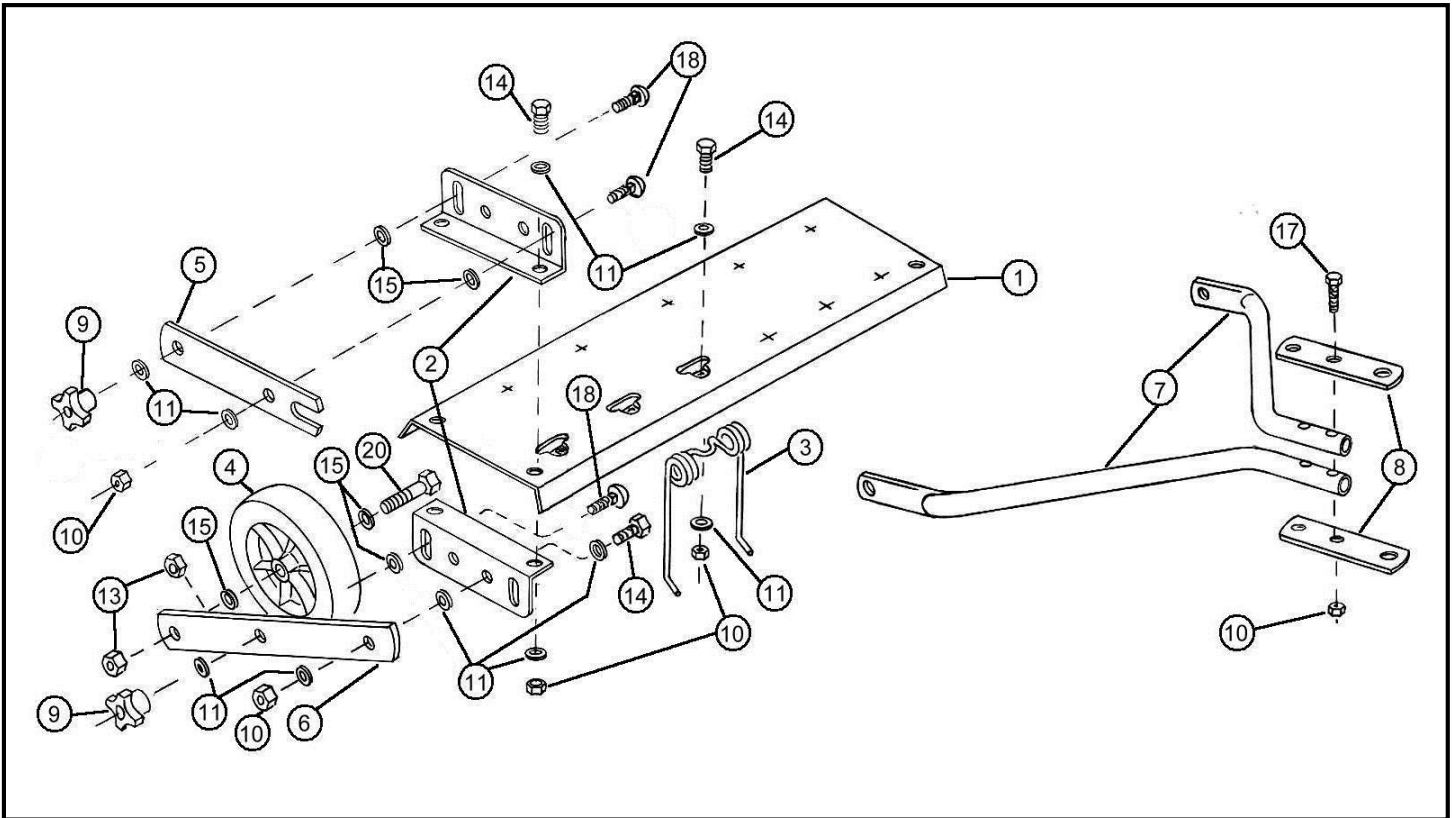
(Minimum Parts Order Charge \$20.00)

1. Address all parts orders or correspondence regarding customer service to one of the following:
Parts Dept. Phone: (937) 337-3641
Mid West Products, Inc. Fax: (937) 337-0755
P.O. Box 301 E-mail: Parts@Mid-West-Products-Inc.com
Phillipsburg, OH 45354 Website: www.Mid-West-Products-Inc.com
2. Write your name and address plainly (print or type).
3. Explain where and how to ship.
4. Give model number of unit.
5. Give part number from parts list, as well as a description, including color, of the part and the quantity you need.
6. Inspect all shipments you receive. If any parts are damaged or missing, file a claim with the carrier before accepting.
7. If you are returning parts, be sure to include WITH THE SHIPMENT a list of the parts with your name and address.
8. All orders for repair and replacement parts will be shipped when paid with Master Card, Visa, or personal check/money order. Prices subject to change without notice.

GUARANTEE

The merchandise you have purchased from us has been carefully engineered and manufactured under Mid West Products rigid quality standards and should give you satisfactory, dependable operation. However, like all mechanical merchandise, it may occasionally require adjustment or maintenance. Should you need technical assistance, please contact MID WEST PRODUCTS.

PARTS DIAGRAM & LIST



Key	Part No.	Description	Qty
1	21-1003	40" Tray	1
2	21-1005	Adjustment Bracket	4
3	21-1002	Tine Wire	10
4	21-1000R	8" Rib Tread Wheel	2
	21-1000D	8" Diamond Tread Wheel (Optional)	2
5	21-1006	Hitch Strap	2
6	21-1007	Wheel Strap	2
7	1-2524	Hitch Tube	2
8	1-2828	Hitch Bracket	2
9	9-1622	5/16 – 18 Knob	4
10	X-1107	5/16 – 18 Lock Nut	18
11	L-99	5/16 Washer	40
13	X-1353	½ - 13 Lock Nut	4
14	L-59	5/16 -18 x ¾ HHCS	16
15	L-64A	½ Flat Washer	10
17	X-1545	5/16 – 18 X 2 ¼ HHCS	2
18	X-1302	5/16 – 18 X 1 Carr. Bolt	6
20	X-1698	½-13 X 3 HHCS	2